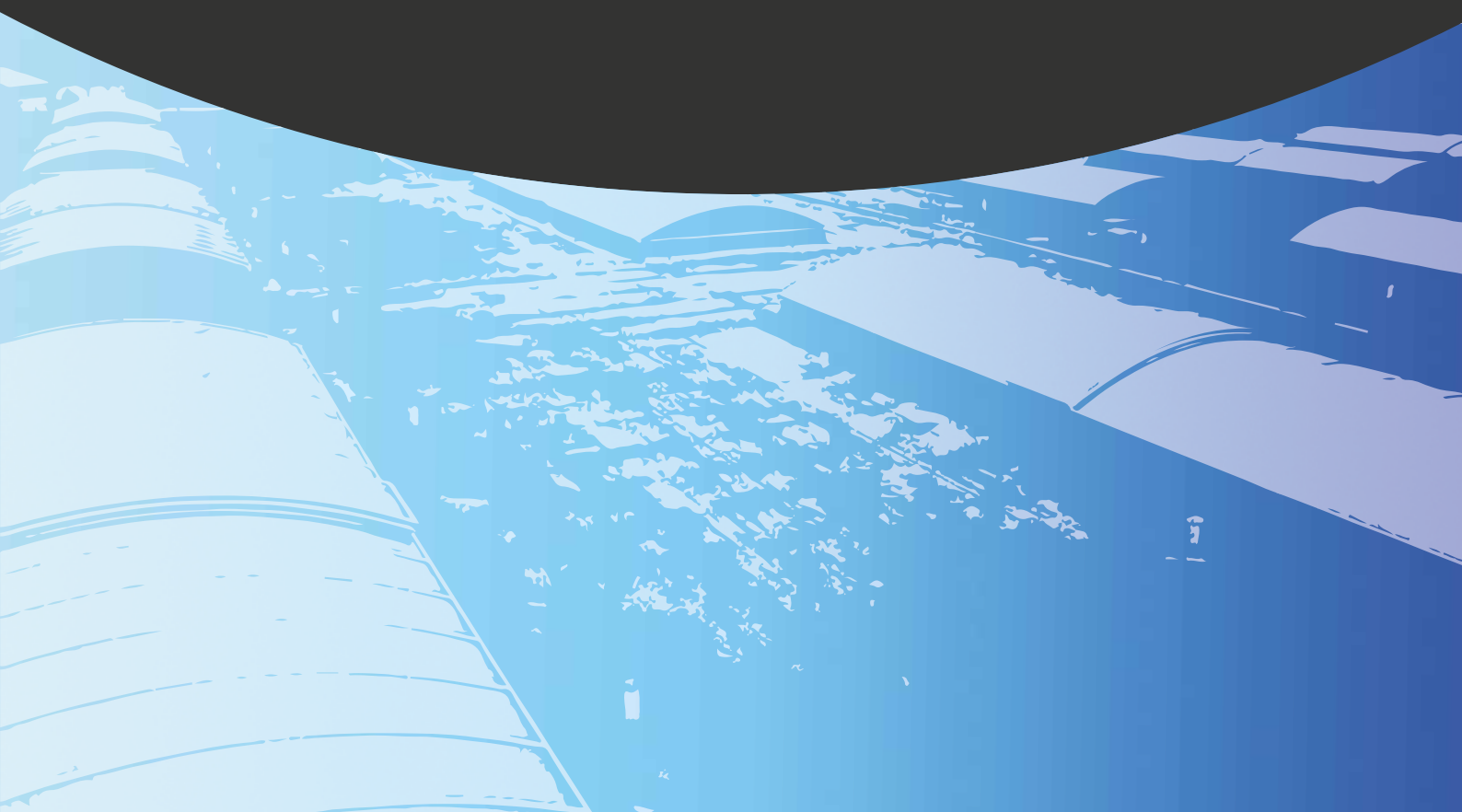


**dipi**<sup>®</sup>



**SKYLIGHTS**





**Since 2005 CIPI, s.r.o.** has been producing and installing skylights. Over the time the Company has been developing to be an established supplier of skylights for various industrial as well as civil buildings in Slovakia and Europe. In addition to new buildings, our skylights are also design for rehabilitation and reconstruction of older industrial and logistic buildings. The company's portfolio consists of the following types of roofing skylights:

**Arch skylights ARCHSKY**

the best-selling skylight with a wide range of applications, ideal for reconstructions of roofs of older buildings

**Saddle skylights TRIANGELSKY**

suitable for specific buildings requiring thicker polycarbonate glazing

**Shed skylights SHEDSKY**

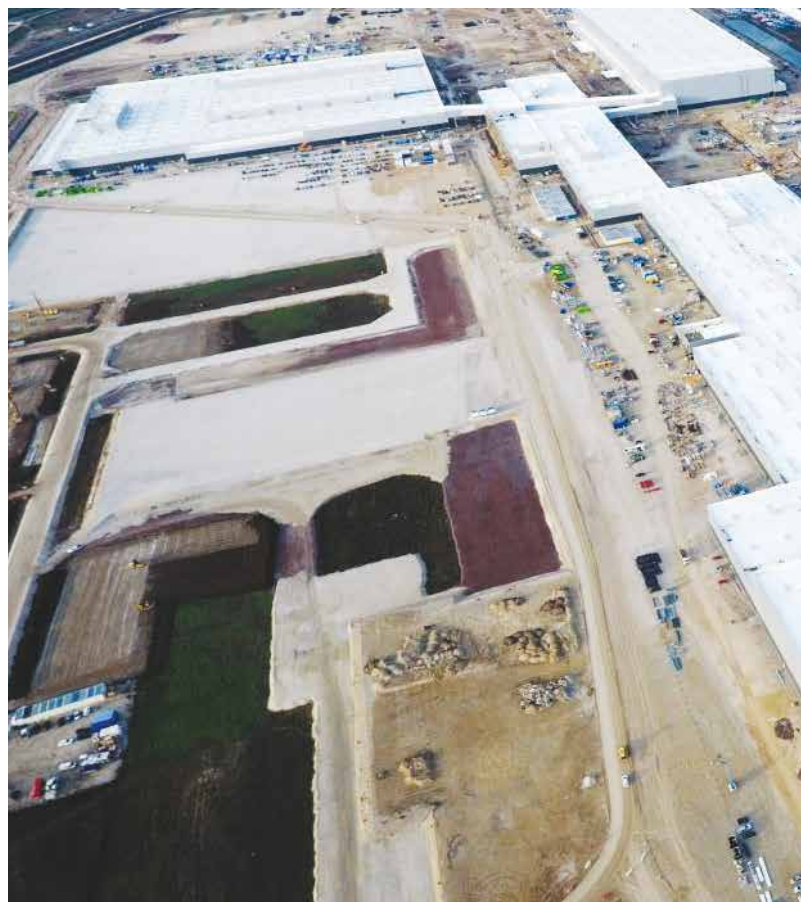
unlimited glazing thickness, indirect illumination of interior and possibility to prepare a structure for solar collector mounting – suitable for energy self-sufficient buildings with a suitable orientation to the cardinal points

**Desk and spot skylights DESKSKY**

with straight glazing made to the size up to 2.0 x 3.5 m

**Roofing access holes ACCESSSKY**

with polycarbonate glazing or opaque with insulated aluminium sash





## Specification of skylights

All skylights leaving our production hall are subject to static assessment according to place of their location and are able to bear snow load up to 5.0 kN/m<sup>2</sup>.

In all types of skylights there are used high quality polycarbonates made by well-known European producers and certified aluminium profiles. Depending on specific features of skylight installation environment, the system design of our skylights allows application of various types of polycarbonate glazing (polycarbonate of reduced transmission IR radiation, increased resistance to hail, sandwich structure glazing with excellent heat transfer parameters U).

Production of our roof skylights is based on the European Standard certified according to EN 14963 with the CE marking.

The system design of our skylights allows using a wide range of accessories such as:

- ventlights – allowing day ventilation, with electric or pneumatic control, with possible connection to control unit provided with weather sensor.
- securing against dropping down – certificated securing against dropping down capable to absorb impact energy up to 1200J.
- sunscreen – architectural design to reduce sunlight penetration
- preparation of skylight for installation of flaps for heat and combustion products removal and of forced ventilation systems.

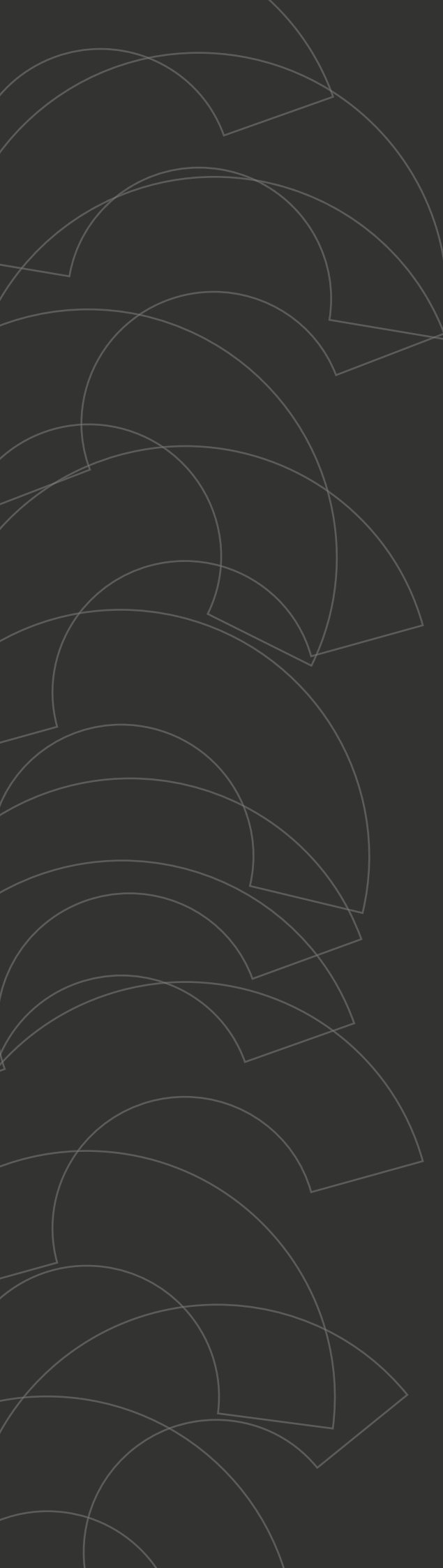
Our intention is to provide our customers with solutions tailored to their needs. Our technical department is constantly working on innovations and optimization of our skylights (skylights with interrupted thermal bridge suitable for buildings of low energy standard).

---

### Advantages:

- In construction – light and almost maintenance-free aluminium structure allowing fast and easy installation
- In operation – excellent light transmittance into space, reduced overheating of the interior, due to thermal insulation properties of skylight it is possible to optimize thermal management of the building
- In maintenance – almost maintenance-free structure with polycarbonate glazing where common cleaners are sufficient

Our company has clearly defined quality management. Thanks to high-quality materials and regular inspections of production process, we provide standard warranties for our products from 5 years and more



Bystrická cesta 2761 || 034 01 Ružomberok || Slovakia  
cipí@cipí.sk || www.cipí.sk